

# Cyber 48V Magnetic suction rail



Miniaturization of equipment, components and track; chromatic quality, energy efficiency, high visual comfort, wide range of light spreads, high uniformity and precision. Direct or suspended installation on 48V low-voltage track in maximum safety.

A person is walking away from the camera through a modern, curved architectural space. The ceiling is a grid of recessed lighting, and the walls are curved. The lighting is warm and ambient. The overall color palette is dominated by reds and oranges.

**track**

ARCHITECTURAL LIGHTING SOLUTIONS

[www.tendalighting.com](http://www.tendalighting.com)

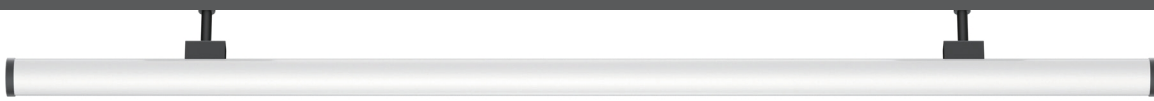
# Cybertrack family



**Spotlight**  
5W/7W/11W  
15°/24°/36°



**Linear light**  
7W/15W  
120°



**Tube light**  
12W/24W/36W  
120°



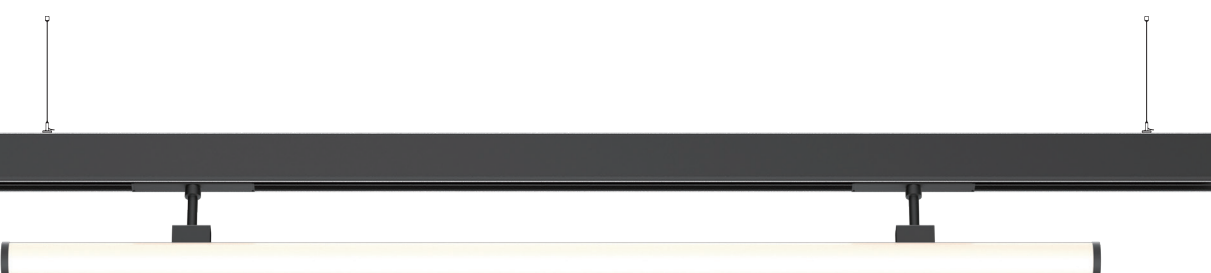
**Trimless 1mm**



**Trimless 12mm**



**Surface**



**Suspended**



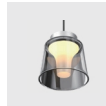
**Adjustable raster**  
6W/12W  
24°/36°



**linear raster**  
6W/12W  
24°/36°



**Pendant light**  
5W  
120°



**Pendant light**  
4W  
120°



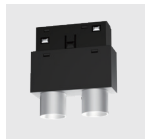
**Pendant light**  
4W  
24°



**Pendant light**  
5W  
24°/36°



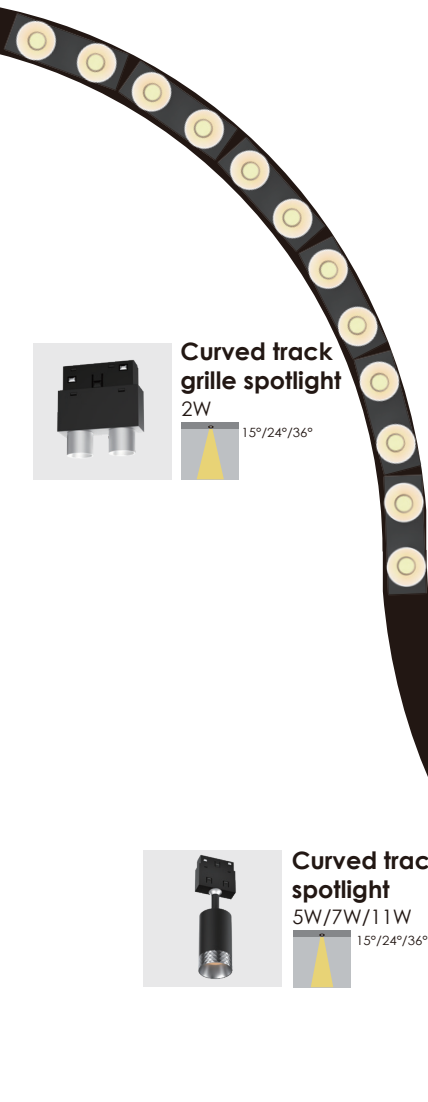
**Pendant spotlight**  
7W  
24°/36°



**Curved track grille spotlight**  
2W  
15°/24°/36°



**Curved track spotlight**  
5W/7W/11W  
15°/24°/36°

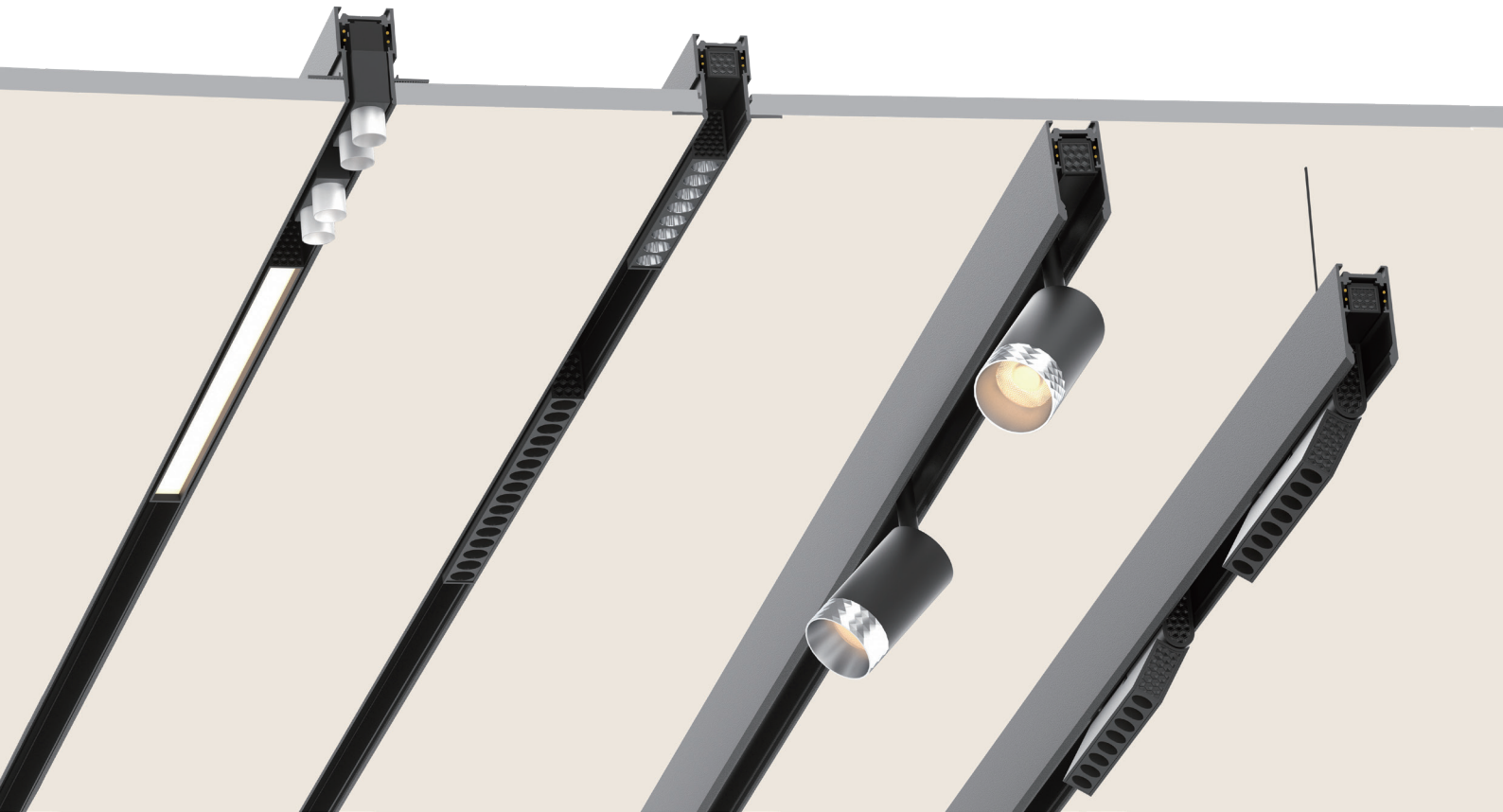






SLENDER  
TRACKS  
SLIM  
ENERGY  
LUMINAIRES  
SMART  
CONTROLS  
SAVING

The low voltage electrical system (48V DC) will not cause electrical shock. In particular, devices are defined as Class III and the voltage produced is low, so much so that it is not normally dangerous in the event of contact with the human body.

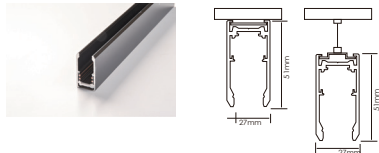


## Cybertrack | Reliability for better Light

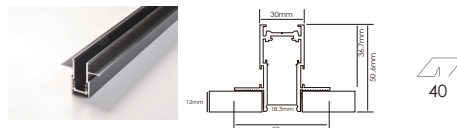


- Installation on Low Voltage track (48V)
- Range of floodlights and pendants with built-in DC / DC converter hidden in the adapter
- Miniaturized floodlights for 1 and 2 adjustable bodies with swivel and rotation movement.
- Fixed linear floodlights
- Pendants with cable adjustment and body rotation system to facilitate alignment
- Adapter-track connection with fast click-fit system
- Main bodies made of aluminium
- High-definition optics made of metallised thermoplastic material, integrated in the innovative black antiglare screen that defines emission with luminance control UGR<19
- Compatible with Beacon accessory for 48V track
- IP20

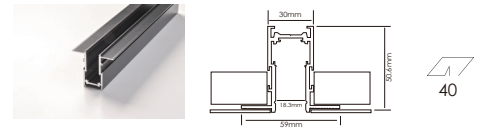
### Surface track



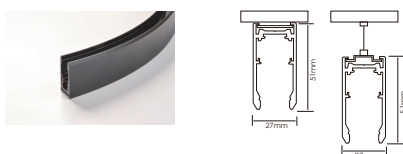
### Trimless 12mm track



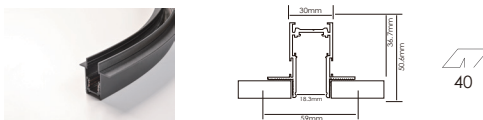
### Trimless 1mm track



### Surface Curved track



### Trimless 12mm Curved track





**Focus on  
the right  
things**

# You're on the right track

## ARCHITECTURAL LIGHTING SOLUTIONS

---

### CRI

Chromatic yield defines the ability to saturate colours. We select the best LEDs with incomparable colour yields even for critical colours such as red, achieving CRI values of more than 97.



### Intelligent light control system

Different control options for dimming  
Diversion, all available for remote  
recessed or surface installation.



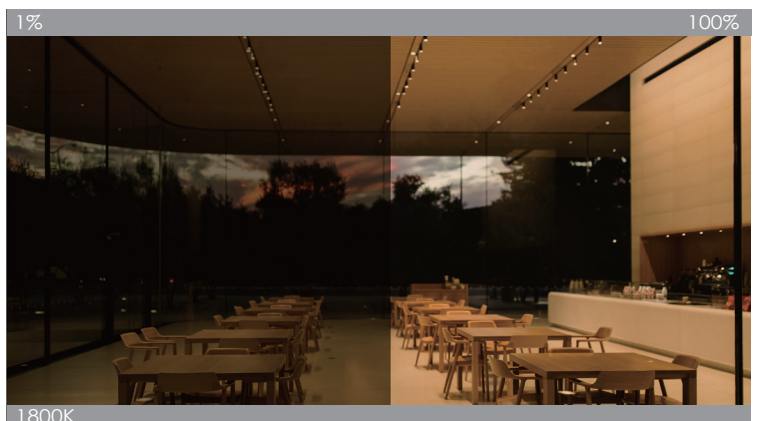
### Quality of vertical lighting

Vertical lighting is our masterpiece. Light  
entirely overlaps the surface of the wall.  
Ensuring delicacy. Total cleanliness from  
bottom to top with maximum uniformity,  
without edging effects.



### Brightness and color temperature synchronized changing

Brightness and color temperature  
synchronized changing is a new feature  
that can change the color temperature  
from 1800K to 2700K. The color tem-  
perature can change with the adjust-  
ment of brightness, achieving 1% accu-  
rate depth dimming.





UNORNAMENTED  
AESTHETICS  
WITH A MULTITUDE  
OF OPTIONS  
AND EFFORTLESS  
INSTALLATION



**48Vtrack  
system  
the original**



# You're on the right track

## Reliability for better Light

---

### Easy to install

Intelligent lighting solution that integrates the latest-generation beacon powered directly on a 48V electrified track. It is thereby possible to provide not only light but also smart services via Bluetooth.



### Efficient

The track has a square crosssection of only 30x59 mm thanks to miniaturization of the converter fully built into the adapter; both are connected to the track using a click-fit system. Installation and maintenance without needing tools.



### Maximum Safety

The low voltage electrical system (48V DC) will not cause electrical shock. In particular, devices are defined as Class III and the voltage produced is low, so much so that it is not normally dangerous in the event of contact with the human body.

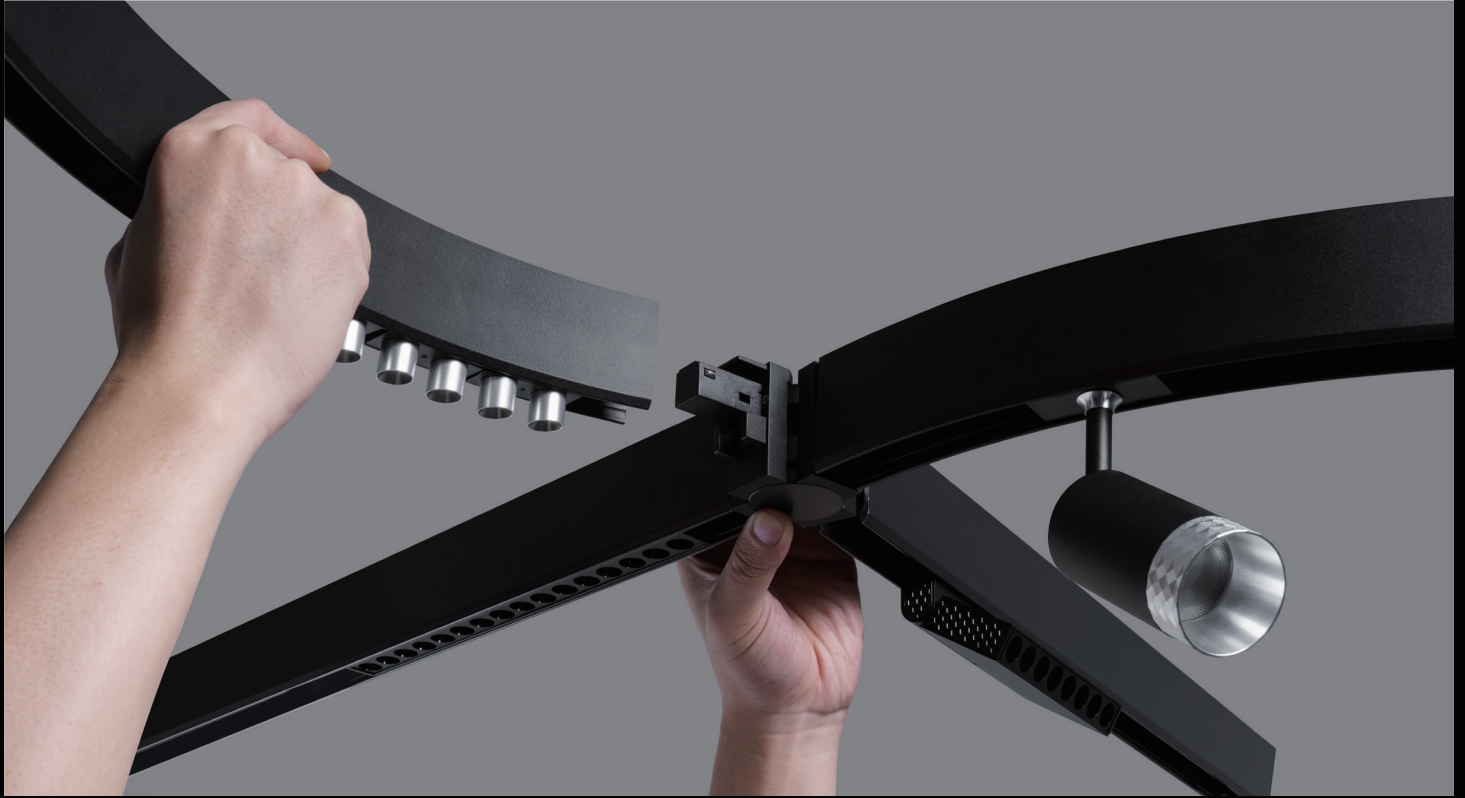


### Compact

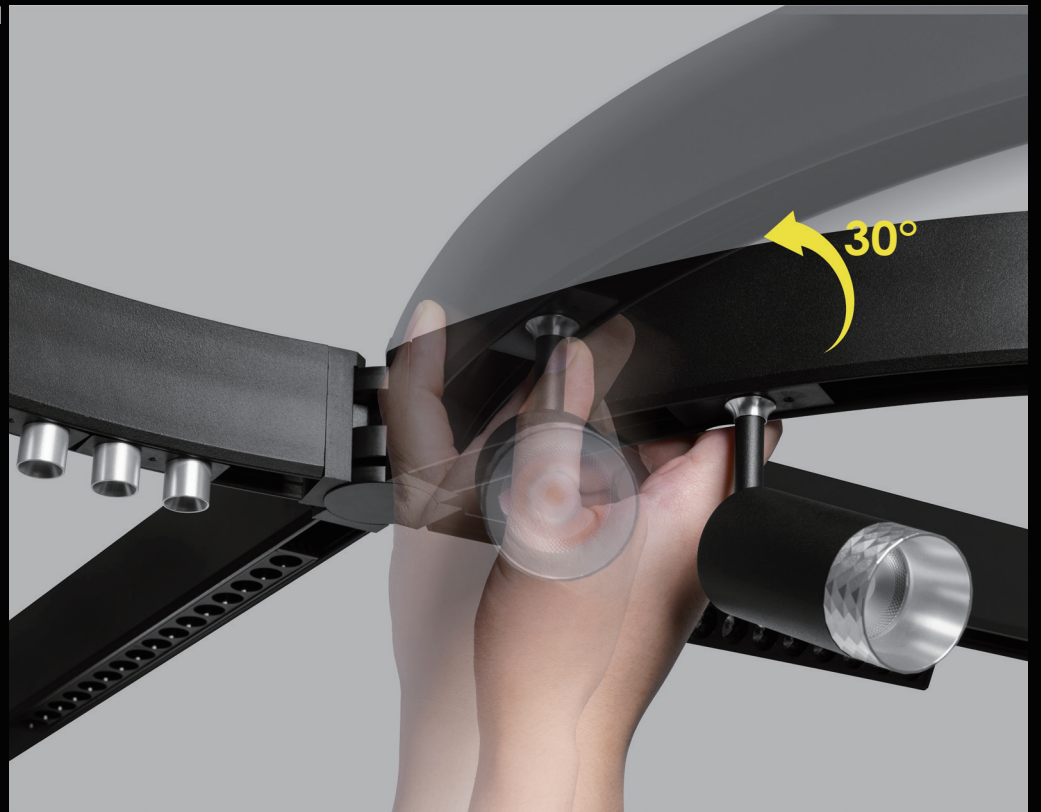
The electrified 48V track also incorporates the Powerline databus. Despite miniaturization, the DC-String converter still offers full control of each device by sending individual signals through the DC Powerline line, including dimming of single devices without additional wiring.



# CONFIGURATIONA



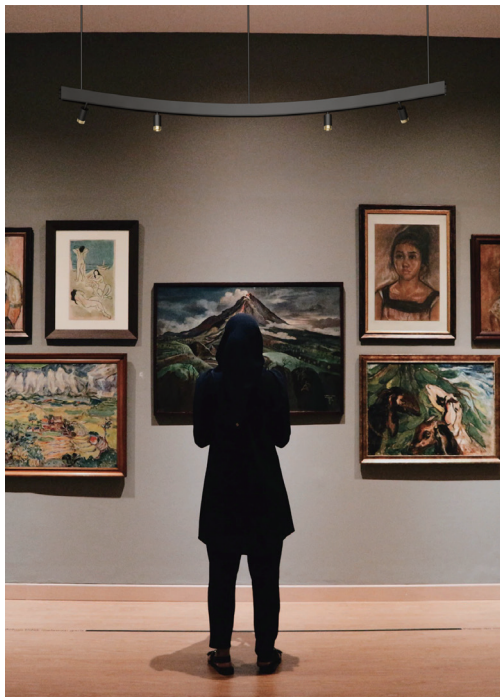
The key to achieve creative and versatile geometries is a unique patented connection joint that allows the profiles to create orientation configurations, easily connecting up to 4 profiles together. A revolution in system lighting.



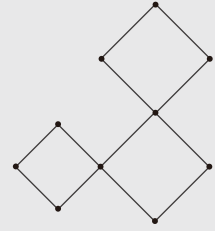
# ARCHITECTURAL LIGHTING SOLUTIONS

## CONFIGURATIONA

Most any kind of layout is achievable thanks to the versatility of the system. From pure geometric compositions up to free shapes, combining both Surface and Suspension modules to obtain an eye-catching 3D configuration.

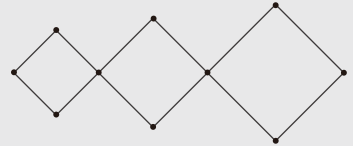


### EXAMPLE NO.1



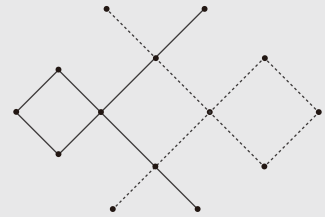
- 8 x Suspension Profile 1500mm
- 4 x Suspension Profile 1000mm

### EXAMPLE NO.2



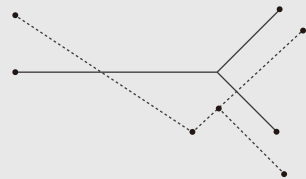
- 4 x Suspension Profile 2000mm
- 4 x Suspension Profile 1500mm
- 4 x Suspension Profile 1000mm

### EXAMPLE NO.3



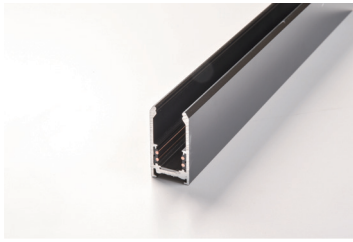
- 1 x Suspension Profile 2500mm
- 2 x Suspension Profile 1000mm
- 1 x Surface Profile 2000mm
- 1 x Surface Profile 1500mm
- 1 x Surface Profile 1000mm

### EXAMPLE NO.4



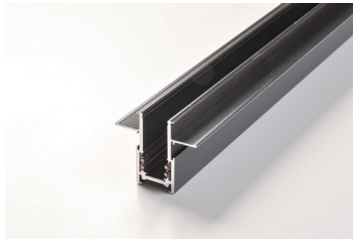
- 2 x Suspension Profile 2500mm
- 4 x Suspension Profile 1500mm
- 2 x Surface Profile 2500mm
- 4 x Surface Profile 1500mm





	Length	Input Voltage	Installation	Material	Color	Model Number
<b>Surface</b>	1000mm	DC48V	trim 30mm	aluminum	black	CY16-SUR-TR100B
	2000mm	DC48V	trim 30mm	aluminum	black	CY16-SUR-TR200B
	3000mm	DC48V	trim 30mm	aluminum	black	CY16-SUR-TR300B

DC48V | CE IP20 Intelligent control system |



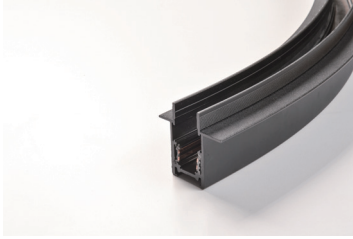
	Length	Input Voltage	Installation	Material	Color	Model Number
<b>TRIMLESS</b>	1000mm	DC48V	trim 30mm	aluminum	black	CY16-RE01T-100B
	2000mm	DC48V	trim 30mm	aluminum	black	CY16-RE01T-200B
	3000mm	DC48V	trim 30mm	aluminum	black	CY16-RE01T-300B

DC48V | CE IP20 Intelligent control system |



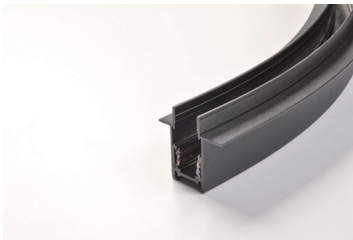
	Length	Input Voltage	Installation	Material	Color	Model Number
<b>TRIMLESS</b>	1000mm	DC48V	trim 30mm	aluminum	black	CY16-RE02T-100B
	2000mm	DC48V	trim 30mm	aluminum	black	CY16-RE02T-200B
	3000mm	DC48V	trim 30mm	aluminum	black	CY16-RE02T-300B

DC48V | CE IP20 Intelligent control system |



	Length	Input Voltage	Installation	Material	Color	Model Number
<b>TRIMLESS curved quarter</b>	1000mm	DC48V	trim 30mm	aluminum	black	CY16-RE01T-ARC80Q
	2000mm	DC48V	trim 30mm	aluminum	black	CY16-RE01T-ARC100Q
	3000mm	DC48V	trim 30mm	aluminum	black	CY16-RE01T-ARC120Q

DC48V | CE IP20



	Length	Input Voltage	Installation	Material	Color	Model Number
<b>TRIMLESS curved half</b>	1000mm	DC48V	trim 30mm	aluminum	black	CY16-RE01T-ARC80H
	2000mm	DC48V	trim 30mm	aluminum	black	CY16-RE01T-ARC100H
	3000mm	DC48V	trim 30mm	aluminum	black	CY16-RE01T-ARC120H

DC48V | CE IP20



	Length	Input Voltage	Installation	Material	Color	Model Number
<b>Surface curved quarter</b>	1000mm	DC48V	trim 30mm	aluminum	black	CY16-SUR-ARC80Q
	2000mm	DC48V	trim 30mm	aluminum	black	CY16-SUR-ARC100Q
	3000mm	DC48V	trim 30mm	aluminum	black	CY16-SUR-ARC120Q

DC48V | CE IP20



	Length	Input Voltage	Installation	Material	Color	Model Number
<b>Surface curved half</b>	1000mm	DC48V	trim 30mm	aluminum	black	CY16-SUR-ARC80H
	2000mm	DC48V	trim 30mm	aluminum	black	CY16-SUR-ARC100H
	3000mm	DC48V	trim 30mm	aluminum	black	CY16-SUR-ARC120H

DC48V | CE IP20



### **CY16-SUR-HOR**

- Horizontal Track corner for trimless track
- 100x100mm
- include track connector and circuits connector



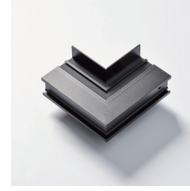
### **CY16-SUR-VER**

- Vertical Track corner for surface track
- 100x100mm
- include track connector and circuits connector



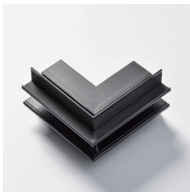
### **CY16-RE01T-HOR**

- Horizontal Track corner for trimless track
- 100x100mm
- include track connector and circuits connector



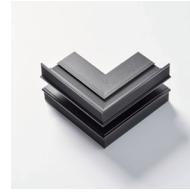
### **CY16-RE01T-VER**

- Vertical Track corner for trimless track
- 100x100mm
- include track connector and circuits connector



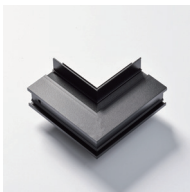
### **CY16-RE01T-EXT**

- External Track corner for trimless track
- 100x100mm
- include track connector and circuits connector



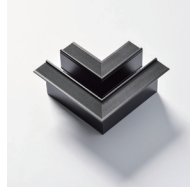
### **CY16-RE02T-EXT**

- External Track corner for trimless track
- 100x100mm
- include track connector and circuits connector



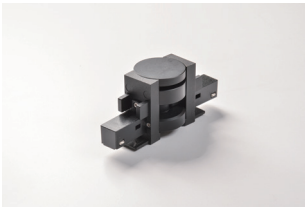
### **CY16-RE02T-VER**

- Vertical Track corner for trimless track
- 100x100mm
- include track connector and circuits connector



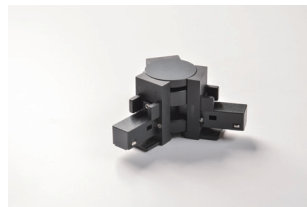
### **CY16-RE02T-HOR**

- Horizontal Track corner for trimless track
- 100x100mm
- include track connector and circuits connector



### **CY16-FJ02**

- BLACK COLOR
- PLASTIC
- L120\*H50mm
- Join in 2 directions



### **CY16-FJ03**

- BLACK COLOR
- PLASTIC
- L120\*W80\*H50mm
- Join in 3 directions



### **CY16-FJ04**

- BLACK COLOR
- PLASTIC
- L120\*W120\*H50mm
- Join in 3 directions



### **CY16-SUR-END**

- BLACK COLOR
- PLASTIC
- 1Set 2Pcs



### **CY16-30CON**

- BLACK COLOR
- PLASTIC
- L104xW17xH19mm
- 30cm cable
- 4 wires (LN and signal cables)



### **CY16-200CON**

- BLACK COLOR
- PLASTIC
- L104xW17xH19mm
- 2meter cable
- 4 wires (LN and signal cables)



### **CY16-ARC-200CON**

- BLACK COLOR
- PLASTIC
- L50.5xW16xH17mm
- 30cm cable
- 4 wires (LN and signal cables)



### **CY16-TR-CON**

- BLACK COLOR
- PLASTIC
- L144xW17xH19mm
- Included: track connector + circuit connector



### **CY16-RE-END**

- BLACK COLOR
- PLASTIC
- 1Set 2Pcs



### **CY16-BI-DR100**

- DC48V
- 80W
- AC176-264V
- BLACK
- insert into track
- L280\*W22.2\*H49.5mm



### **CY16-BI-DR200**

- DC48V
- 150W
- AC176-264V
- BLACK
- insert into track
- L280\*W22.2\*H49.5mm



### **CY16-SUS-KIT**

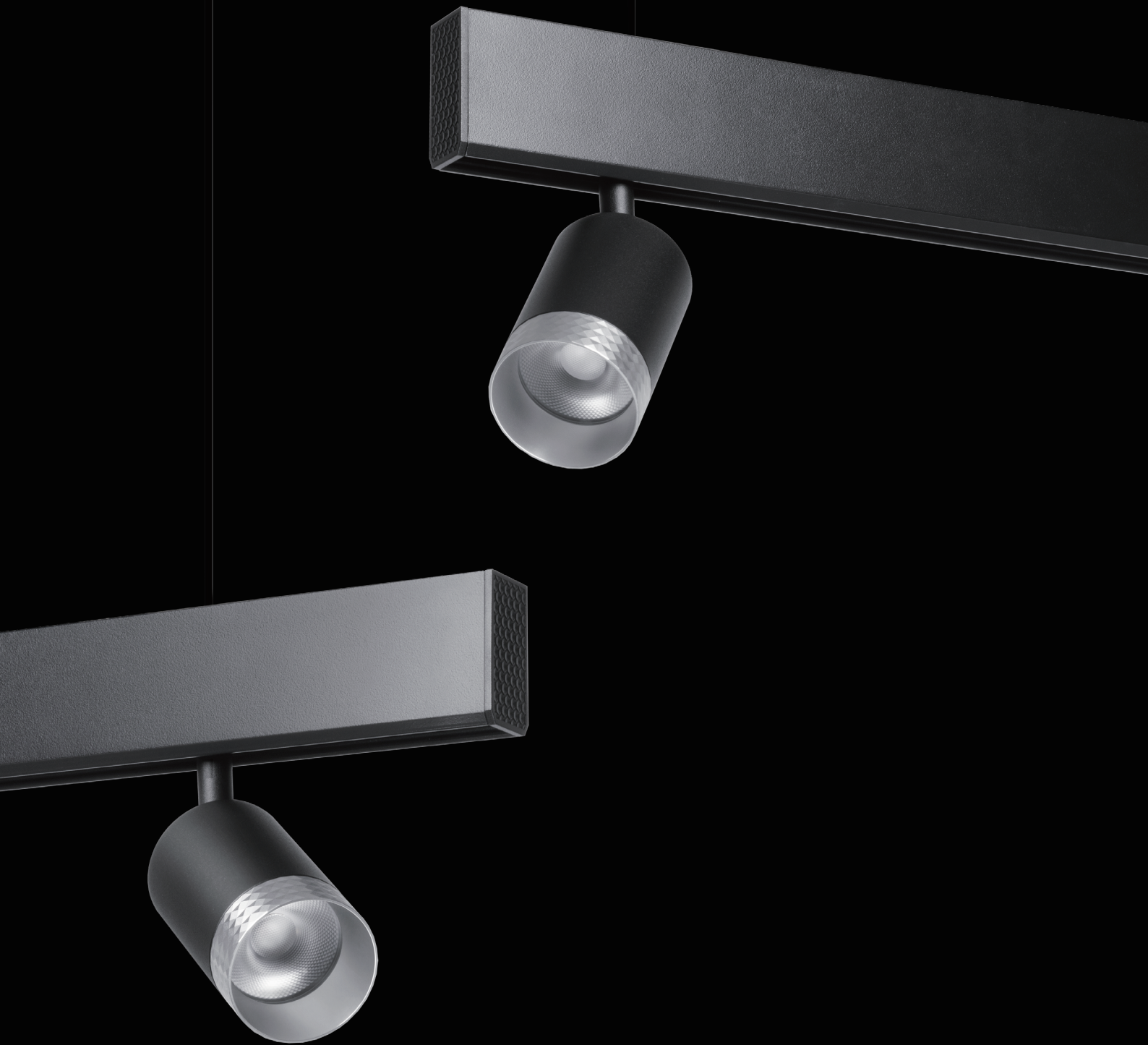
- suspended kit for surface track
- 200mm cable
- 1 set 2pcs



### **CY16-ARC-CON**

- BLACK COLOR
- PLASTIC
- L50.5xW16xH17mm
- 30mm cable
- Included: track connector + circuit connector







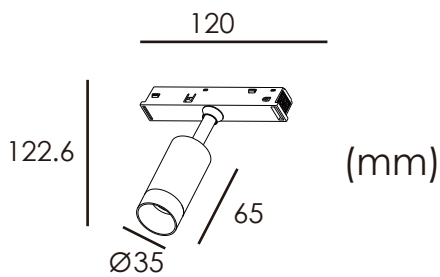
	P	Flux	CCT	Beam	Color	Voltage
<b>CY16-S05</b>	5W	350lm	3000K	15°/24°/36°	B	DC48V
	5W	370lm	4000K	15°/24°/36°	B	DC48V
	5W	400lm	5000K	15°/24°/36°	B	DC48V



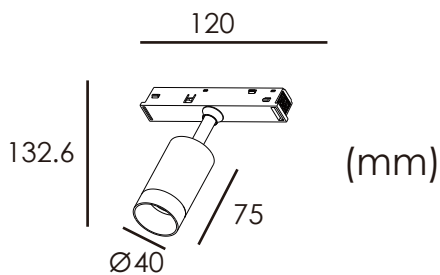
	P	Flux	CCT	Beam	Color	Voltage
<b>CY16-S07</b>	7W	500lm	3000K	15°/24°/36°	B	DC48V
	7W	520lm	4000K	15°/24°/36°	B	DC48V
	7W	550lm	5000K	15°/24°/36°	B	DC48V



**CY16-S05**



**CY16-S07**



**Three views**



**OPTIONS**

- 1 No DIM
- 2 DIM DALI
- 3 Bluetooth/ZigBee









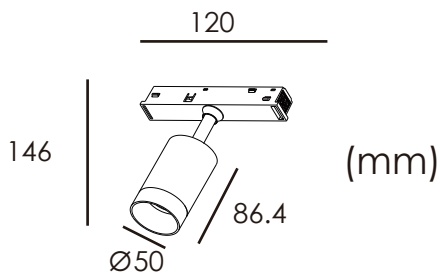
	P	Flux	CCT	Beam	Color	Voltage
<b>CY16-S11</b>	11W	800lm	3000K	15°/24°/36°	B	DC48V
	11W	820lm	4000K	15°/24°/36°	B	DC48V
	11W	850lm	5000K	15°/24°/36°	B	DC48V



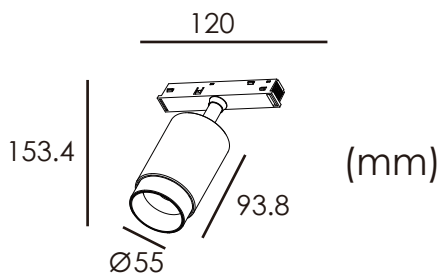
	P	Flux	CCT	Beam	Color	Voltage
<b>CY16-S13ZO</b>	13W	800lm	3000K	15°-36°	B	DC48V
	13W	820lm	4000K	15°-36°	B	DC48V
	13W	850lm	5000K	15°-36°	B	DC48V



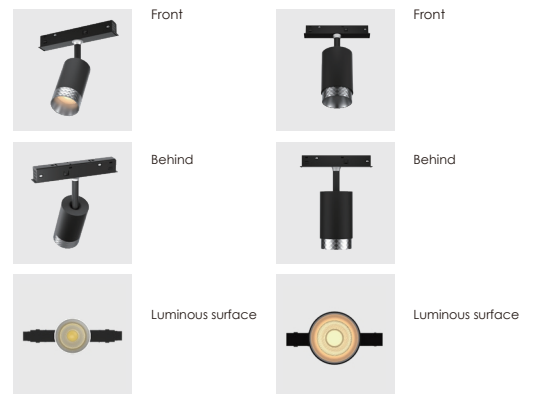
**CY16-S11**



**CY16-S13ZO**



**Three views**



**OPTIONS**

- 1 No DIM
- 2 DIM DALI
- 3 Bluetooth/ZigBee







# Curved track



# smooth snap mounting

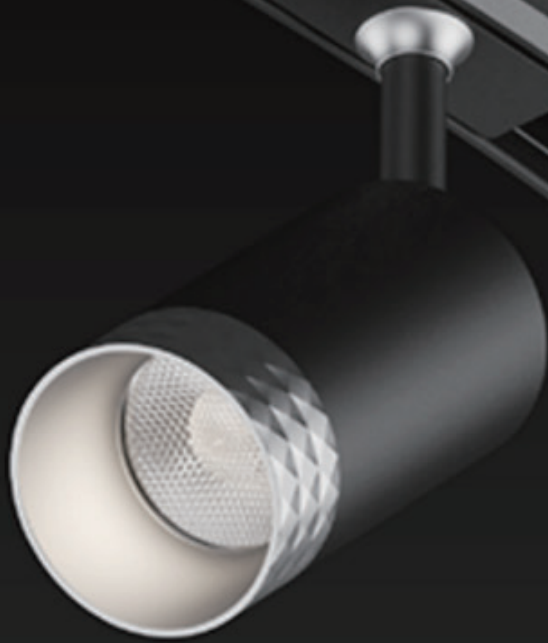


snap in  
snap out



snap in  
snap out

All luminaires have a smooth snap adapter. This eliminates the need for installation tools, giving you the freedom to adjust the position and rotation at any time. It only takes a matter of seconds and one simple hand movement to remove a luminaire.





	P	Flux	CCT	Beam	Color	Voltage
<b>CY16-ARC-S05</b>	5W	350lm	3000K	15°/24°/36°	B	DC48V
	5W	370lm	4000K	15°/24°/36°	B	DC48V
	5W	400lm	5000K	15°/24°/36°	B	DC48V

LED | III | UGR<19 | IP20 | CRI>90 | L80B20 >50.000h | 
 MacAdam Step 3 | DIMMABLE | TRACK 48V | 15°/24°/36° | 350° | 90°



	P	Flux	CCT	Beam	Color	Voltage
<b>CY16-ARC-S07</b>	7W	500lm	3000K	15°/24°/36°	B	DC48V
	7W	520lm	4000K	15°/24°/36°	B	DC48V
	7W	550lm	5000K	15°/24°/36°	B	DC48V

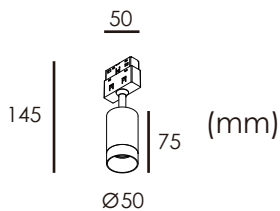
LED | III | UGR<19 | IP20 | CRI>90 | L80B20 >50.000h | 
 MacAdam Step 3 | DIMMABLE | TRACK 48V | 15°/24°/36° | 350° | 90°



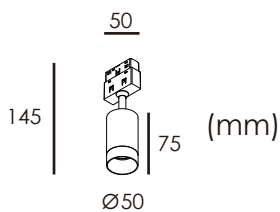
	P	Flux	CCT	Beam	Color	Voltage
<b>CY16-ARC-S11</b>	13W	800lm	3000K	15°/24°/36°	B	DC48V
	13W	820lm	4000K	15°/24°/36°	B	DC48V
	13W	850lm	5000K	15°/24°/36°	B	DC48V

LED | III | UGR<19 | IP20 | CRI>90 | L80B20 >50.000h | 
 MacAdam Step 3 | DIMMABLE | TRACK 48V | 15°/24°/36° | 350° | 90°

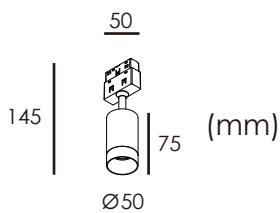
**CY16-ARC-S05**



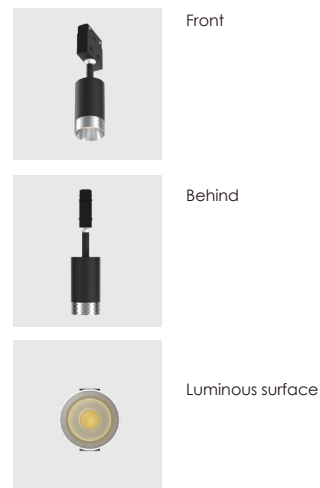
**CY16-ARC-S07**



**CY16-ARC-S11**



**Three views**



**OPTIONS**

- 1 No DIM









	P	Flux	CCT	Beam	Color	Voltage
CY16-ARC-S02	2W	100lm	3000K	15°/24°/36°	B	DC48V
	2W	120lm	4000K	15°/24°/36°	B	DC48V
	2W	150lm	5000K	15°/24°/36°	B	DC48V

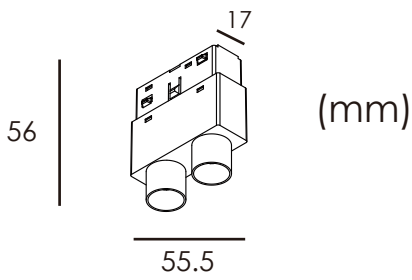
LED | III | UGR<19 | IP20 | CRI>90 | L80B20 >50.000h
 
 MacAdam Step 3
 

 DIMMABLE
 

 TRACK 48V
 

 15°/24°/36°

CY16-ARC-S02



Three views



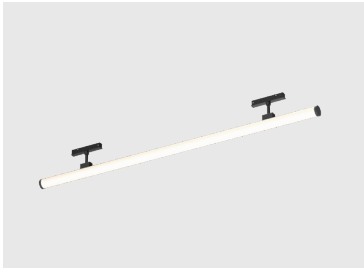
OPTIONS

- 1 No DIM

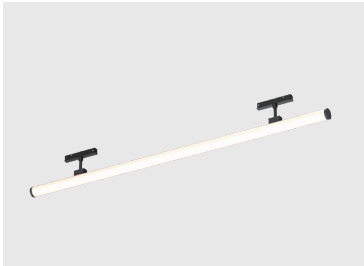




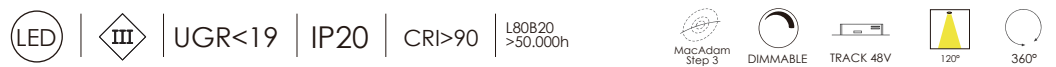




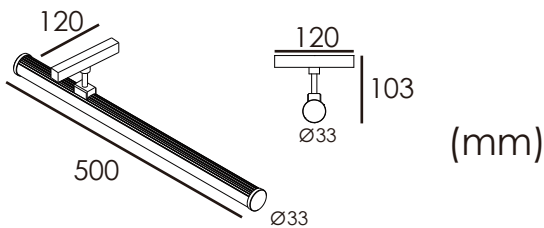
	P	Flux	CCT	Beam	Color	Voltage
<b>CY16-TUBE50</b>	12W	940lm	3000K	120°	B	DC48V
	12W	960lm	4000K	120°	B	DC48V
	12W	980lm	5000K	120°	B	DC48V



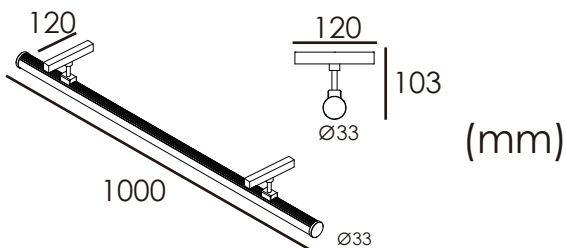
	P	Flux	CCT	Beam	Color	Voltage
<b>CY16-TUBE100</b>	24W	1880lm	3000K	120°	B	DC48V
	24W	1900lm	4000K	120°	B	DC48V
	24W	1920lm	5000K	120°	B	DC48V



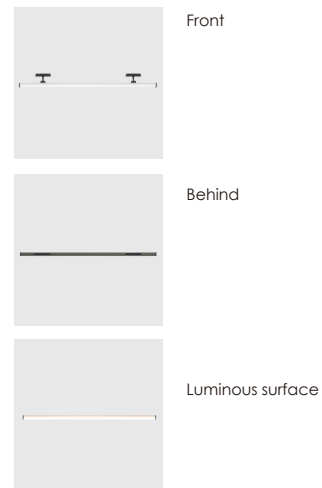
**CY16-TUBE50**



**CY16-TUBE100**



**Three views**



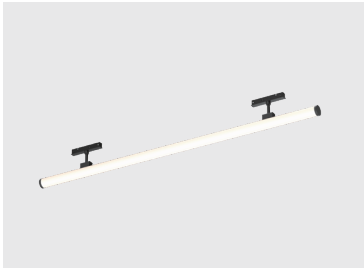
**OPTIONS**

- 1 No DIM
- 2 DIM DALI
- 3 Bluetooth/ZigBee





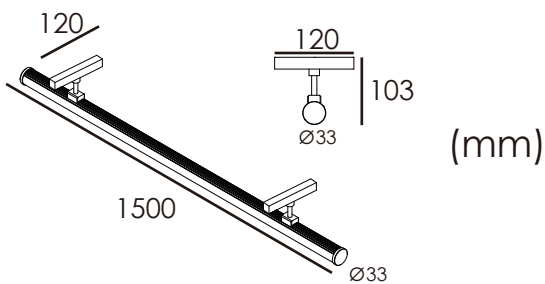




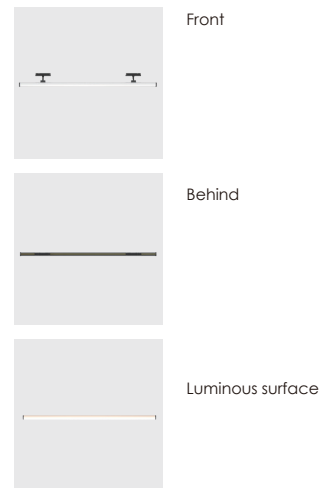
	P	Flux	CCT	Beam	Color	Voltage
<b>CY16-TUBE120</b>	36W	2820lm	3000K	120°	B	DC48V
	36W	2840lm	4000K	120°	B	DC48V
	36W	2860lm	5000K	120°	B	DC48V

LED | III | UGR<19 | IP20 | CRI>90 | L80B20 >50.000h
MacAdam Step 3
DIMMABLE
TRACK 48V
120°
360°

**CY16-TUBE120**



**Three views**



**OPTIONS**

- 1 No DIM
- 2 DIM DALI
- 3 Bluetooth/ZigBee



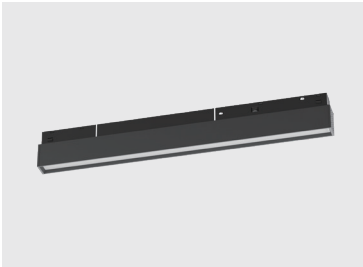






	P	Flux	CCT	Beam	Color	Voltage
<b>CY16-L300</b>	7W	420lm	3000K	120°	B	DC48V
	7W	440lm	4000K	120°	B	DC48V
	7W	460lm	5000K	120°	B	DC48V

LED | III | UGR<19 | IP20 | CRI>90 | L80B20 >50.000h

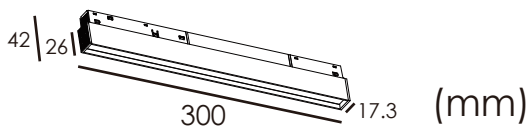


	P	Flux	CCT	Beam	Color	Voltage
<b>CY16-L600</b>	15W	900lm	3000K	120°	B	DC48V
	15W	920lm	4000K	120°	B	DC48V
	15W	940lm	5000K	120°	B	DC48V

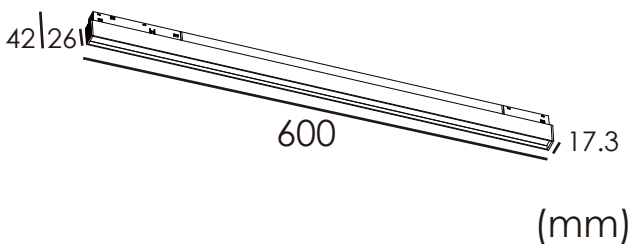
LED | III | UGR<19 | IP20 | CRI>90 | L80B20 >50.000h



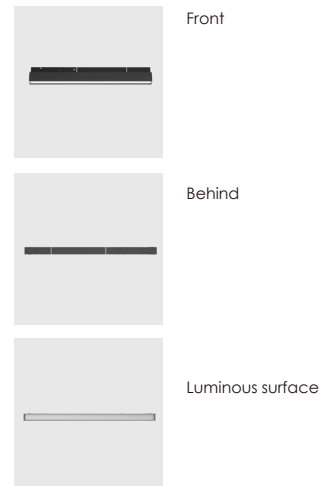
**CY16-L300**



**CY16-L600**



**Three views**



**OPTIONS**

- 1 No DIM
- 2 DIM DALI
- 3 Bluetooth/ZigBee



COLOUR | BK ■ WH □

MATERIAL | AL

Cybertrack

IES files PLEASE CONSULT









	P	Flux	CCT	Beam	Color	Voltage
<b>CY16-LR06</b>	6W	420lm	3000K	24°/36°	B	DC48V
	6W	440lm	4000K	24°/36°	B	DC48V
	6W	460lm	5000K	24°/36°	B	DC48V

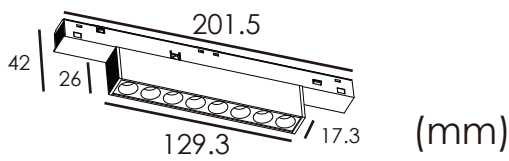
LED | III | UGR<19 | IP20 | CRI>90 | L80B20 >50.000h | 
 MacAdam Step 3 | DIMMABLE | TRACK 48V | 24°/36°



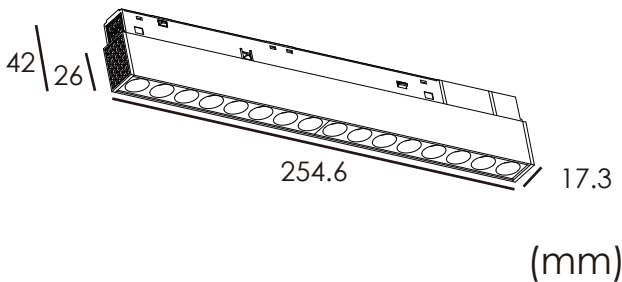
	P	Flux	CCT	Beam	Color	Voltage
<b>CY16-LR12</b>	12W	840lm	3000K	24°/36°	B	DC48V
	12W	860lm	4000K	24°/36°	B	DC48V
	12W	880lm	5000K	24°/36°	B	DC48V

LED | III | UGR<19 | IP20 | CRI>90 | L80B20 >50.000h | 
 MacAdam Step 3 | DIMMABLE | TRACK 48V | 24°/36°

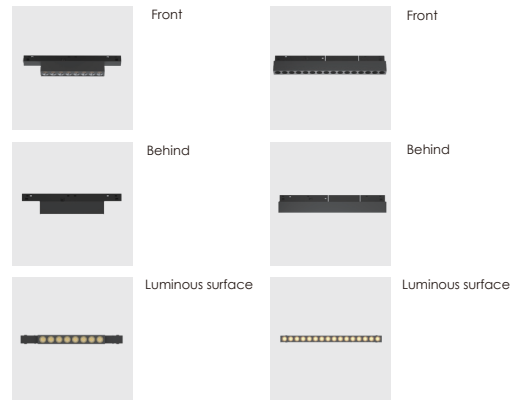
**CY16-LR06**



**CY16-LR12**



**Three views**



**OPTIONS**

- 1 No DIM
- 2 DIM DALI
- 3 Bluetooth/ZigBee











	P	Flux	CCT	Beam	Color	Voltage
CY16-AR06	6W	420lm	3000K	24°/36°	B	DC48V
	6W	440lm	4000K	24°/36°	B	DC48V
	6W	460lm	5000K	24°/36°	B	DC48V

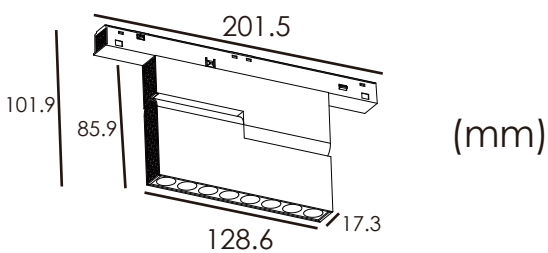
LED | III | UGR<19 | IP20 | CRI>90 | L80B20 >50.000h | 
 MacAdam Step 3 | DIMMABLE | TRACK 48V | 24°/36° | 90°



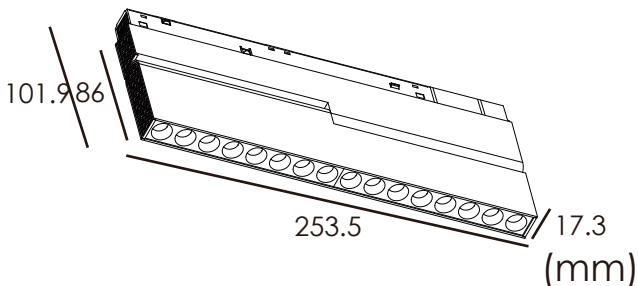
	P	Flux	CCT	Beam	Color	Voltage
CY16-AR12	12W	840lm	3000K	24°/36°	B	DC48V
	12W	860lm	4000K	24°/36°	B	DC48V
	12W	880lm	5000K	24°/36°	B	DC48V

LED | III | UGR<19 | IP20 | CRI>90 | L80B20 >50.000h | 
 MacAdam Step 3 | DIMMABLE | TRACK 48V | 24°/36° | 90°

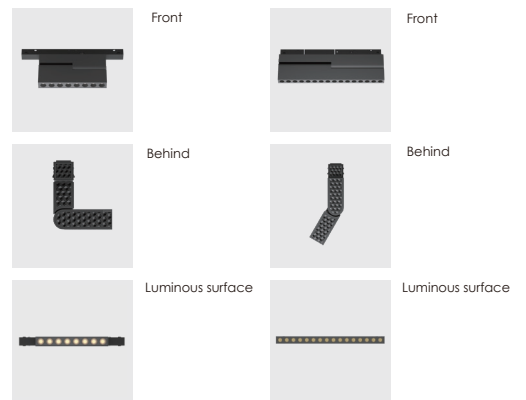
CY16-AR06



CY16-AR12



Three views



OPTIONS

- 1 No DIM
- 2 DIM DALI
- 3 Bluetooth/ZigBee





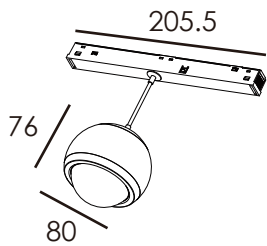


	P	Flux	CCT	Beam	Color	Voltage
<b>CY16-PEN03</b>	5W	300lm	3000K	120°	B	DC48V
	5W	320lm	4000K	120°	B	DC48V
	5W	340lm	5000K	120°	B	DC48V

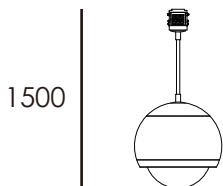
LED | III | UGR<19 | IP20 | CRI>90 | L80B20 >50.000h



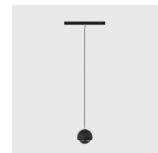
**CY16-TUBE120**



(mm)



**Three views**



Front



Behind



Luminous surface

**OPTIONS**

- 1 No DIM
- 2 DIM DALI
- 3 Bluetooth/ZigBee







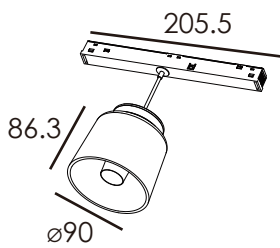


	P	Flux	CCT	Beam	Color	Voltage
CY16-PEN01	4W	300lm	3000K	120°	B	DC48V
	4W	320lm	4000K	120°	B	DC48V
	4W	340lm	5000K	120°	B	DC48V

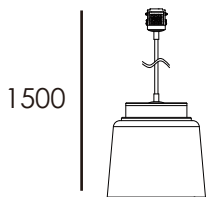
LED | III | UGR<19 | IP20 | CRI>90 | L80B20 >50.000h



CY16-PEN01



(mm)



Three views



Front



behind



luminous surface

OPTIONS

- 1 No DIM
- 2 DIM DALI
- 3 Bluetooth/ZigBee







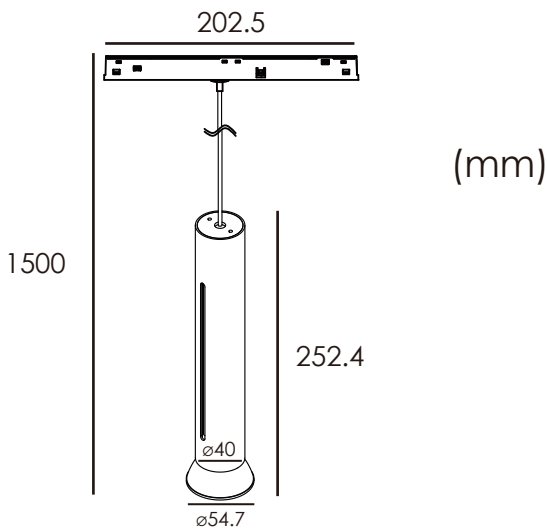


	P	Flux	CCT	Beam	Color	Voltage
<b>CY16-PEN-S07</b>	7W	320lm	3000K	15°/24°/36°	B	DC48V
	7W	340lm	4000K	15°/24°/36°	B	DC48V
	7W	360lm	5000K	15°/24°/36°	B	DC48V

LED | III | UGR<19 | IP20 | CRI>90 | L80B20 >50.000h



CY16-PEN-S07



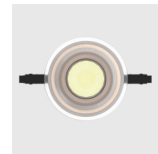
Three views



Front



Behind



Luminous surface

OPTIONS

- 1 No DIM
- 2 DIM DALI
- 3 Bluetooth/ZigBee







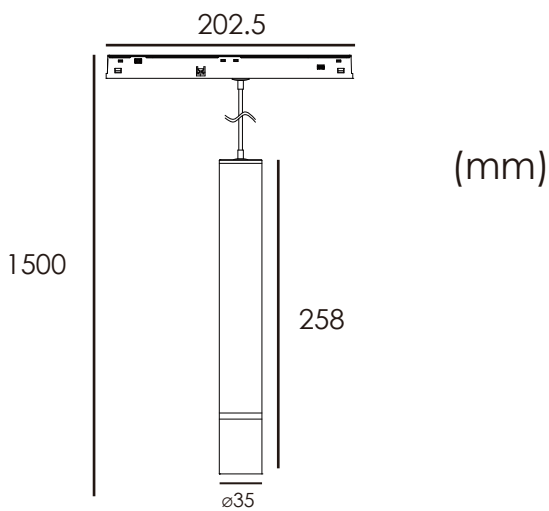


	P	Flux	CCT	Beam	Color	Voltage
CY16-PEN-S05	5W	250lm	3000K	24°	B	DC48V
	5W	270lm	4000K	24°	B	DC48V
	5W	290lm	5000K	24°	B	DC48V

LED | III | UGR<19 | IP20 | CRI>90 | L80B20 >50.000h



CY16-PEN-S05



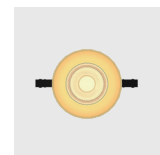
Three views



Front



Behind



Luminous surface

OPTIONS

- 1 No DIM
- 2 DIM DALI
- 3 Bluetooth/ZigBee







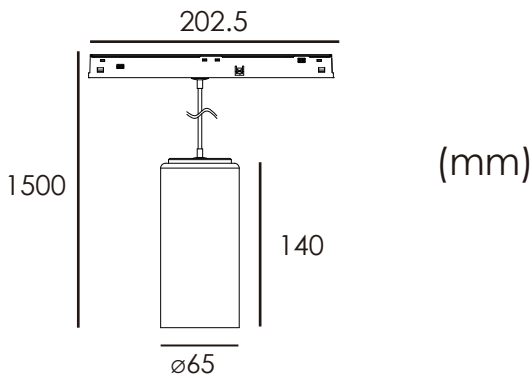


	P	Flux	CCT	Beam	Color	Voltage
CY16-PEN02	4W	100lm	3000K	15°/24°/36°	B	DC48V
	4W	120lm	4000K	15°/24°/36°	B	DC48V
	4W	150lm	5000K	15°/24°/36°	B	DC48V

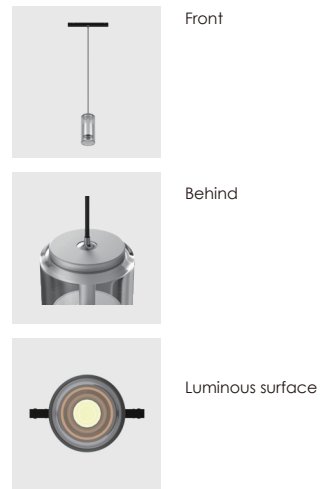
LED | III | UGR<19 | IP20 | CRI>90 | L80B20 >50.000h



CY16-PEN02



Three views



OPTIONS

- 1 No DIM
- 2 DIM DALI
- 3 Bluetooth/ZigBee

